

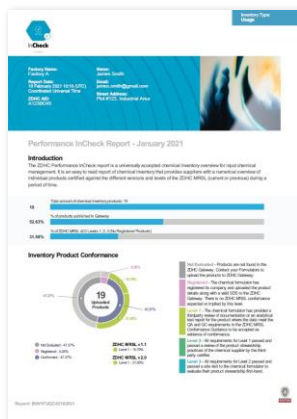


# BVE<sup>3</sup> ENVIRONMENTAL EMISSION EVALUATOR

ZDHC OFFICIAL TOOL FOR  
CHEMICAL INVENTORY MANAGEMENT

## BVE<sup>3</sup> is a ZDHC recognized Digital Solution

BVE<sup>3</sup> is your digital chemical inventory management tool, and environmental emissions evaluator, uniquely designed for the industry that covers textile, apparel and footwear.



### Deliverables:

1. **ZDHC Performance InCheck Report**
2. **Instant Supply Chain Performance Report** | Global, Regional, Factory performance overview
3. **BVE<sup>3</sup> Technical Report** | Chemical product compliance against ZDHC MRSL / AFIRM RSL / REACH SVHC
4. **Emission Discharge Estimation** | Realistic discharge scenarios for the hazardous substances used along the manufacturing process and released to the environment



## Retailers, Brands & Factories using BVE<sup>3</sup>

BVE<sup>3</sup> is available in English and Chinese, and we support our customers in local languages.

**50+**

Brands have  
partnered with  
BVE<sup>3</sup>

**2000+**

Suppliers have  
subscribed for  
BVE<sup>3</sup>

**125K+**

SDS & Chemical  
Formulations in  
BVE<sup>3</sup>

**35+**

Countries in  
major  
continents

**15+**

Regional  
Supporting  
Centers



**BUREAU  
VERITAS**

# Verified InCheck – Level 1

## WHAT is the objection of CIL verification?

- To create credibility for the inventory data uploaded by Supplier
- To establish transparency through an on-site due diligence “Spot Check” by approved verifier at the Supplier facility

## WHY should you choose Bureau Veritas?

- ✓ Approved for ZDHC Verified InCheck
- ✓ 60+ approved verifiers
- ✓ Global network
- ✓ 20 regional offices to support


## HOW to get started?



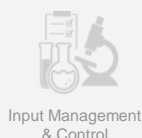
Interested to learn more about **Bureau Veritas Environmental Management Solutions?**

Please refer to our fact sheets, white papers and more on our website.

**Contact us today!**

 [www.cps.bureauveritas.com/needs/sustainable-chemical-management](http://www.cps.bureauveritas.com/needs/sustainable-chemical-management)

Follow us:   



Input Management  
& Control



Testing



BVE<sup>3</sup>



Audit



Advisory  
Services